



DAMEN ANCHOR HANDLING TUG SUPPLIER 200

GENERAL

Basic functions	Offshore supply, towing, anchor handling operations and ROV support
Classification	Lloyds Register ≅100 A1 Anchor Handler, Offshore Supply Ship, Tug, *IWS, EP, ≅ LMC, UMS, CAC(3), DP (AA)
Descriptive note	Special purpose ship

DIMENSIONS

Length o.a.	89.10 m
Length load line	80.70 m
Beam mld.	22.00 m
Depth mld.	9.10 m
Draught summer (base)	7.00 m
Draught summer (keel)	8.20 m
Deadweight (summer)	3700 t
Deck area	650 m ²
Deck load (at 1 m above deck)	1500 t

TANK CAPACITIES

Ballast water	2100 m ³
Fuel oil (service)	410 m ³
Potable water (service)	145 m ³
Fuel oil (cargo)	1050 m ³
Potable water (cargo)	635 m ³
Liquid mud	625 m ³
Brine	330 m ³
Dry Bulk	240 m ³
Chain lockers	330 m ³

PERFORMANCES (APPROX.)

Speed (at 6.30 m draught)	16.4 kn
Bollard pull	200 t

PROPULSION SYSTEM

Main engines	4x MAN 9L27/38
Propulsion power	2x 3285 kW at 800 rpm
Propellers	2x 4200 mm, CPP in optima nozzels
Bow thruster	1x 900 kW, 1990 mm, FPP
Stern thruster	2x 900 kW, 1990 mm, FPP
Bow thruster (retractable)	1x 880 kW, 1800 mm, FPP

AUXILIARY EQUIPMENT

Shaft generators	2x 1600 kW at 1800 rpm, 690 V, 60Hz
Generator sets	2x CAT C32, each 715 kW at 1800 rpm, 690 V, 60 Hz
Emerg./harbour generator set	1x CAT C9, 238 kW at 1800 rpm, 440 V, 60 Hz

DECK LAY-OUT

Deck crane	1x knuckle boom 5 t at 16 m (harbour)
Anchor handling rail cranes	2x knuckle-telescope 3 t at 15 m
AH/Towing winch	2x electric, double drum, 400 t pull, 500 t brake, 2100 m of 86 mm wire
Special handling drum	1x electric, 400 t pull, 500 t brake, 2700 m of 86 mm wire
Secondary winch	2x electric, 140 t pull, 140 t brake, 1600 m of 208 mm rope
Towing pins	4x SWL, 400 t, hydraulic
Chain fork	2x SWL, 650 t, hydraulic
Stern roller	1x SWL, 500 t, split drum, ø 4,0 x 6 m
Tugger winches	2x electric, each 25 t pull

CARGO HANDLING SYSTEM

Ballast pump	2x 100 m ³ /hr at 3 bar
Fuel oil pump	2x 0-150 m ³ /hr at 6 bar
Fresh water pump	1x 0-150 m ³ /hr at 6 bar
Liquid mud pump	1x 0-75 m ³ /hr at 8 bar
Brine pump	1x 0-75 m ³ /hr at 8 bar
Dry bulk system	2x 75 t/hr

ACCOMMODATION

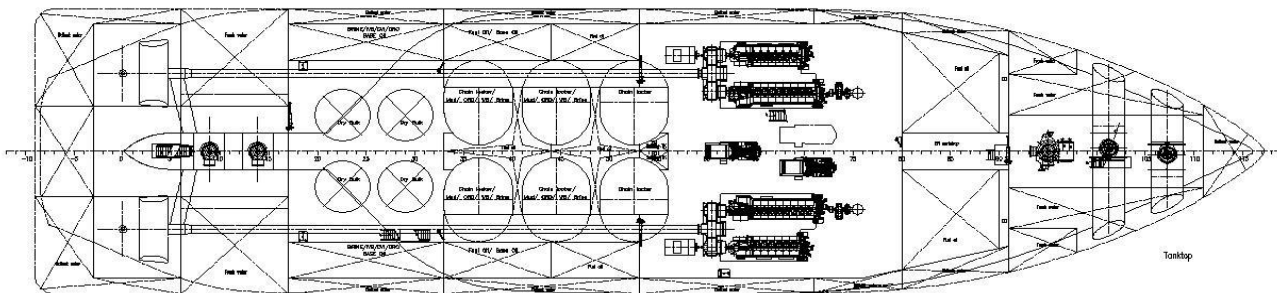
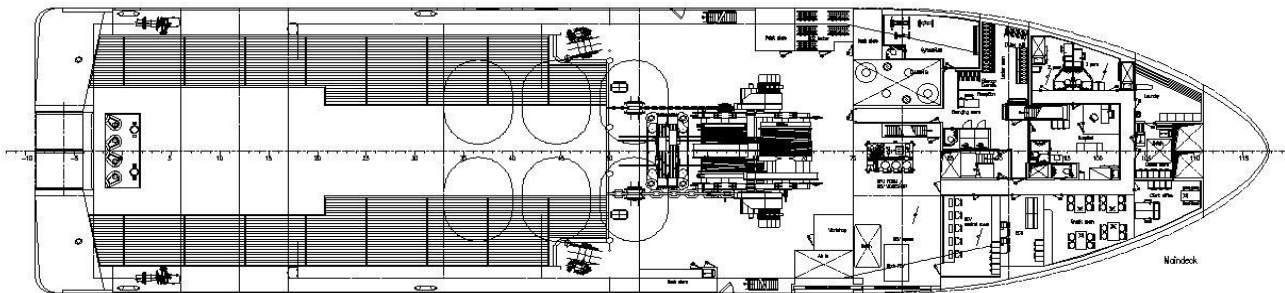
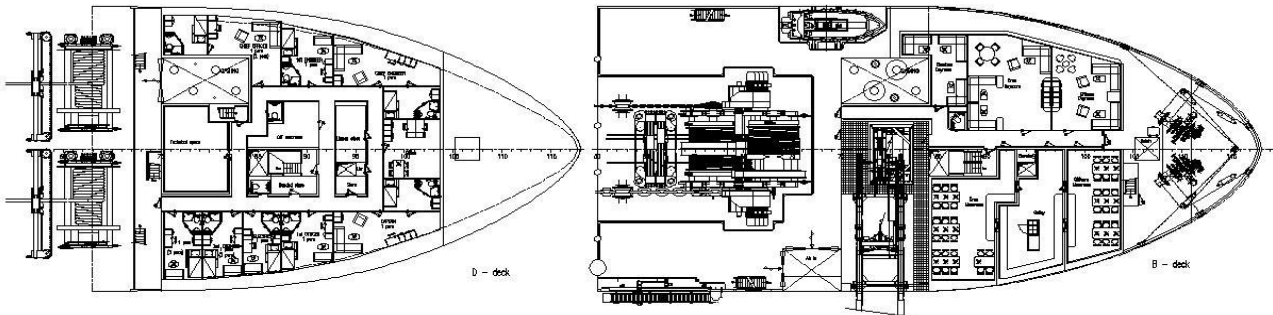
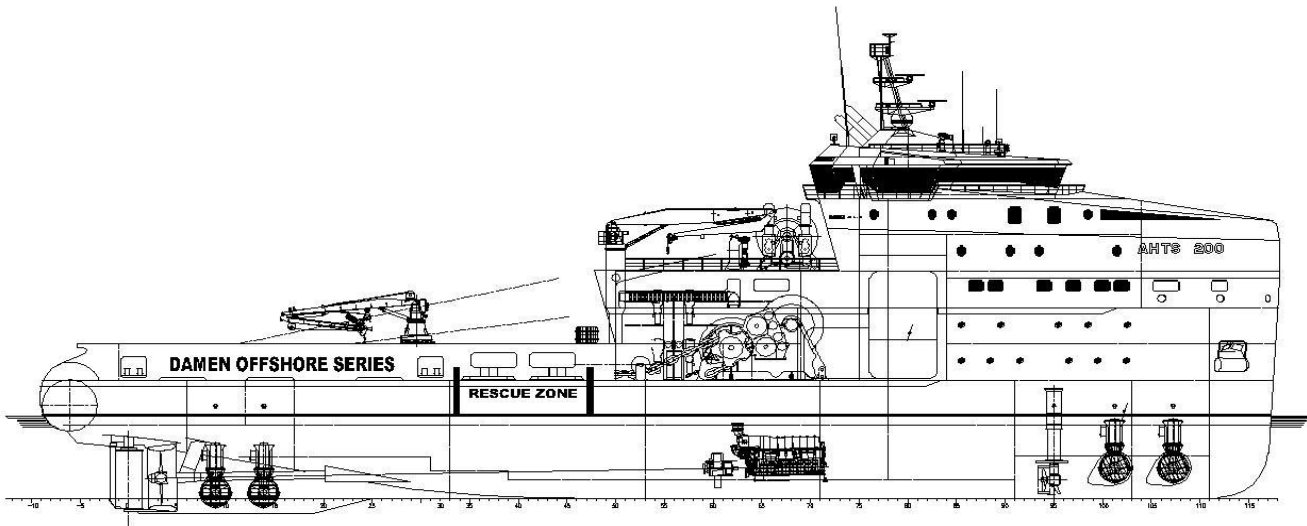
Crew/ special personnel	21 crew)
-------------------------	----------

NAUTICAL AND COMMUNICATION EQUIPMENT

Radar systems	1x X- band + S-band
DP – system	DP-2
GMDSS	Area A3

OPTIONS

Fire Fighting Ship 1 or 2	
Increased DP capability 2	
Travelling cranes	
Hybrid propulsion	
Hydraulic AHT Winch	
Extended accommodation	60 persons
Oil Recovery	
ROV launch and Recovery system	
Torpedo anchor Launch and recovery system	



DAMEN ANCHOR HANDLING TUG SUPPLIER 200

DAMEN

DAMEN SHIPYARDS GORINCHEM

Member of the DAMEN SHIPYARDS GROUP



Industrieterrein Avelingen West 20
4202 MS Gorinchem

P.O. Box 1
4200 AA Gorinchem
The Netherlands

phone +31 (0)183 63 99 11
fax +31 (0)183 63 21 89

info@damen.nl
www.damen.nl